



Greater  
Los Angeles Zoo  
Association  
5333 Zoo Drive  
Los Angeles, CA 90027-1451



FIRST CLASS

Explore Costa Rica!  
November 11-20, 2011



# COSTA RICA

Nature's Treasurehouse

November 11-20, 2011

A Special Expedition for  
Members and Friends of the  
Greater Los Angeles Zoo Association



Greater Los Angeles Zoo Association

Dear Friends of the Los Angeles Zoo:

Join us for an excellent introduction to the natural wealth of Costa Rica on this 10-day expedition. Learn first-hand about the wildlife, tropical ecology, and importance of tropical forests, and enjoy the spectacular natural world of Costa Rica. See howler monkeys, crocodiles, toucans, parrots, colorful insects, butterflies, and diverse rainforests.

Visits will include Volcan Poas, with an excellent introduction to the fiery history of an active volcano near San Jose; the Monteverde Cloudforest, a world-renowned mountain reserve cloaked in mists and cloud; Carara National Park on the Pacific Coast; and Braulio Carrillo, a montane rainforest park with an aerial tram which allows spectacular views as you ride through the rainforest canopy. We will also visit charming San Jose, the bustling capital of Costa Rica.

Leading the expedition will be an excellent Costa Rican naturalist. This expedition will give an excellent exposure to tropical rainforests and tropical ecology, and the plants, animals, insects, and birds which inhabit the forest.

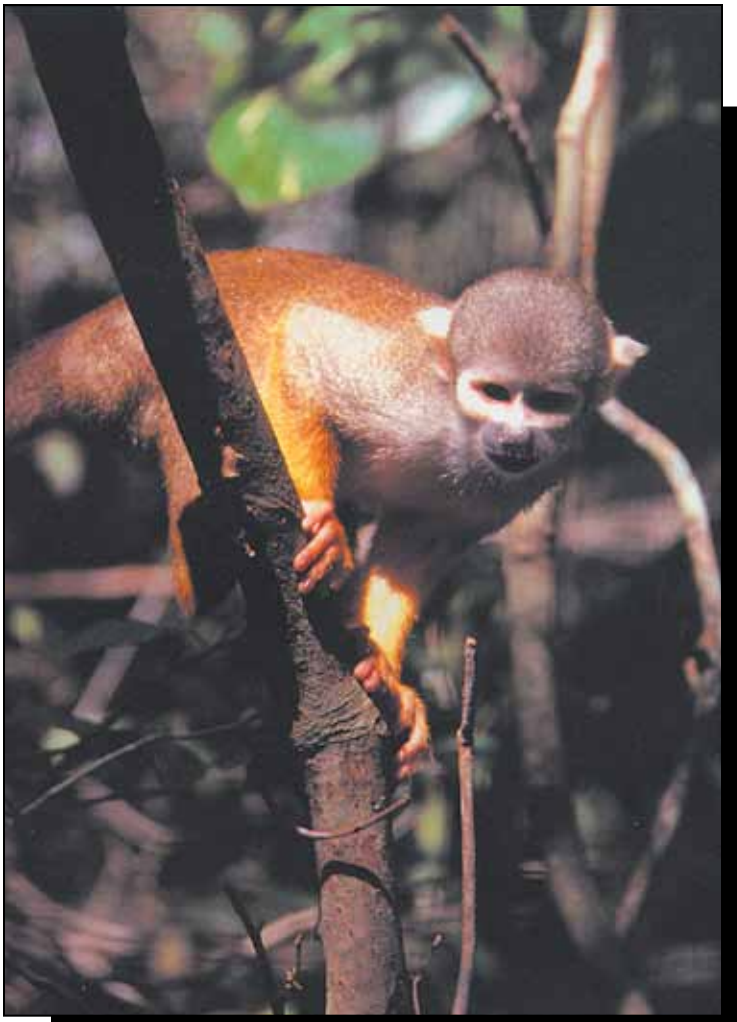
Join us as we explore and learn about the wonders of tropical Costa Rica. Please make your reservation right away as space is limited. For more information, please phone the Zoo at (323) 644-4792 or Betchart Expeditions Inc. at (800) 252-4910.

Sincerely,

Melissa Grossenbacher  
Associate Director of Special Events



©2011 Betchart Expeditions Inc. All rights reserved.  
Photography by Robert P. Nansen, Thomas C. Boyden,  
Thomas M. Antonio, and Margaret M. Betchart CST# 2036304-40



## ITINERARY

### Day 1 – Los Angeles to San Jose, Costa Rica.

Expedition members fly from Los Angeles to San Jose, the capital of Costa Rica. Transfer to the *Bougainvillea Hotel*.

### Day 2 – Volcan Poas National Park.

Welcome breakfast this morning. We will depart San Jose and begin our introduction to the national parks and natural history of Costa Rica as we explore the dynamic terrain of Volcan Poas. This active volcano continues to spew steam and sulfur gas, and much of the landscape is little changed since the 1952-54 eruptive period. Here we may walk among umbrella plants, tree ferns, colorful warblers, tanagers, and singing wrens. Afternoon drive through the rainforest to the Caribbean lowlands and *Selva Verde Lodge (3 nights)*. A night walk will introduce you to the sounds of the rainforest. B,L,D

### Day 3 – La Selva Biological Station.

This morning we will visit the La Selva Biological Station of the Organization for Tropical Studies, one of the most important sites for tropical forest research in the Americas. The Station has been the research location for thousands of students and ecological papers. An excellent trail system allows easy access to the impressive forest, noted for its immense buttressed, canopy-emergent trees and protective low-lying swamps. Look for three-toed sloths, spider monkeys, leaf-cutter ants, singing insects, and croaking frogs. Meet scientists and learn firsthand about discoveries at La Selva. Enjoy a trip on the Sarapiquí River to look for howler monkeys and other wildlife. Evening lecture and discussion. B,L,D

### Day 4 – Selva Verde & Braulio Carillo Aerial Tram.

Morning naturalist walk at Selva Verde's private reserve to hear and see birds at the start of the day. Then drive to Braulio Carillo National Park. This outstanding national park descends from the Continental Divide to the Caribbean lowlands and acts as a corridor for migrating wildlife. The park offers a wonderful opportunity to explore the upper canopy of the rainforest via an aerial tram. Travel through the rainforest canopy for a bird's-eye view of the forest and its inhabitants. Many species of plants and insects are only found in the upper canopy of the forest. B,L,D

### Day 5 – Arenal National Park & Monteverde Reserve.

Today we will cross the Caribbean lowlands and drive up to the volcanic summit of Costa Rica and the quintessential volcano, Arenal. Arenal Volcano was dormant until 1969 when shock waves, then ash and volcanic bombs rained down on the region. Sometimes the glowing summit can be seen. We will continue along the spine of the Cordillera Central with views to the Gulf of Nicoya on the way to the famous Monteverde Cloudforest. Enjoy a walk to see bromeliads, orchids, motmots, parrots, or hummingbirds, and hear the sounds of birds in the late afternoon. *Val Verde Lodge (2 nights)*. B,L,D

### Day 6 – Monteverde Cloudforest.

Here at an elevation of 5,500 feet on the cool upper slopes of the Cordillera de Tilaran, the world-famous Monteverde Cloudforest Reserve protects an extraordinary lush cloudforest. As we explore the excellent trails, we'll delight in the bromeliads, orchids, tree ferns, and mixed flocks of foraging birds. With luck, we may see the resplendent quetzal, considered by many to be the most beautiful bird in the New World. There will also be an opportunity to learn about the Quaker community. Also you may visit the local museum and women's cooperative. B,L,D

### Day 7 – Monteverde to the Pacific lowlands.

Enjoy an early morning naturalist walk at Monteverde, then a memorable drive to the Pacific lowlands. Look for roadside hawks and flocks of parrots on our drive through the dry deciduous forest and farmland of the Pacific lowlands to *Villa Lapas Resort (2 nights)* situated on a river near one of the most beautiful beaches in Costa Rica. Afternoon snorkeling, swimming, and exploring the mangroves. B,L,D

### Day 8 – Carara National Park.

Carara is in a transitional region between the dry climate of the north and the humid climate of the south with a mixture of species from both areas. Scarlet macaws nest in good numbers along with toucans, trogons, and howler monkeys; it has the highest population of endangered crocodiles in Central America. See the new Visitor Center and begin your exploration on one of the numerous trails along streams and through tall rainforest. In the afternoon we'll discover the mangrove forests at the mouth of the Rio Tarcoles. Here winter shorebirds will be in great numbers along with herons, egrets, scarlet ibis, black skimmers, and maybe another crocodile. B,L,D

### Day 9 – Villa Lapas to San Jose.

Awaken to the sounds of birds and monkeys beginning their day. Join your naturalist to explore the Sky Way trail in Villa Lapas's private reserve near the lodge. Tanagers, trogons, grosbeaks, and parrots are very active and we will look for fruiting trees. After lunch drive through banana, oil palm, and coffee plantations to San Jose for a city tour. Farewell dinner. *Bougainvillea Hotel*. B,L,D

### Day 10 – San Jose to Los Angeles.

Morning return flights to Los Angeles for the end of the expedition.

## COSTS & CONDITIONS

**Expedition Fee:** \$2,795 per person for 10 days, plus air fare of approximately \$650 per person + tax from Los Angeles to Costa Rica, round trip.

**What to Expect:** This expedition is planned for the travel enthusiast who would enjoy exploring and learning about the flora and wildlife of some of Costa Rica's finest national parks. Travel by motorcoach with daily outings on foot of 1 to 2 miles at a leisurely pace suitable for discovery. Typically, it is hot and humid in the lowlands (90's); springlike in the highlands. Even in the dry season, some rain can be expected. At the volcanoes, we will reach 8,000 feet; please consult your physician. This expedition is a tremendous experience for travelers with an appetite for adventure who can tolerate some insects, heat, and bumpy dirt roads for the chance to explore superb natural areas. (No smoking in vehicles, during lectures, or meals, please.)

**Expedition Fee Includes:** Land transport; group airport transfers; accommodations twin share with bath in comfortable country-style lodges and hotels; meals; entrance fees; baggage handling; leadership; administration.

**Expedition Fee Does Not Include:** International air fare (quoted separately); independent airport transfers; gratuity to expedition guide and driver; personal items such as alcoholic beverages, laundry, phone calls, bottled water, snacks, personal insurance; or foreign airport departure taxes.

**Air Fare & Airline Ticketing:** Air fare quoted is based on a group fare from Los Angeles. AIR FARES ARE SUBJECT TO CHANGE.

**Single Accommodations:** Singles are available for \$495. If you do not have a roommate or we cannot assign one, you must pay the extra cost of a single.

**Reservations, Deposits, Payments:** Please mail a deposit of \$500 per person with the completed reservation form. The balance is due 60 days before departure.

**Cancellations & Refunds:** The initial deposit for the expedition is refundable up to 60 days before departure less a handling fee of \$100 per person. There will be no refund for any cancellation after the 60-day period unless your place is resold; then only the \$100 handling fee applies. There are no refunds for unused meals, accommodations, or other trip features.

**Responsibility:** Betchart Expeditions Inc. and the Greater Los Angeles Zoo Association act only as agents for the passenger with respect to transportation and hotels, and exercise every care possible. However, we can assume no liability for injury, damage, delay, loss, accident or irregularity in connection with the services of any airplane, ship, motorcoach, or any other conveyance used in carrying out the arrangements of the tour. We cannot accept any responsibility for losses or additional expenses due to delay or changes in air or other services, sickness, weather, strike, war, terrorism, quarantine, acts of God, or other causes beyond our control. All such losses or expenses will have to be borne by the passenger, as tour rates provide for arrangements only for the time stated. We reserve the right to substitute another leader of similar expertise or reserve the right to cancel any tour prior to departure, in which case the entire payment will be refunded with no further obligation on our part. The right is also reserved to decline to accept or retain any person as a member of the tour. No refund will be made for the unused portion of any tour unless arrangements are made in sufficient time to avoid penalties. The price of the program is based on current tariffs and rates, and is subject to change. Any tariff, exchange rate, or fuel increases will be passed on to participants. Baggage is carried at the owner's risk entirely. It is understood that the air ticket when issued shall constitute the sole contract between the passenger and the airline concerned. The airlines concerned are not to be held responsible for any act, omission, or event during the time passengers are not on board their plane or conveyance.

## QUESTIONS?

Please call Melissa Grossenbacher **(323) 644-4792** or Renee Apostolou at Betchart Expeditions Inc. **(800) 252-4910** or **(408) 252-4910**. Email: mgrossenbacher@LAZoo.org

## RESERVATIONS

#1208

**YES!** I/We want to join the **Costa Rica Expedition, November 11-20, 2011**, offered by **GLAZA**. Please reserve \_\_\_\_\_ space(s). As a deposit, I/we have enclosed a check for \$ \_\_\_\_\_ (\$500 per person) payable to Betchart Expeditions Inc. Trust Account.

Name(s) \_\_\_\_\_ Age \_\_\_\_\_ Sex \_\_\_\_\_

\_\_\_\_\_ Age \_\_\_\_\_ Sex \_\_\_\_\_

Address \_\_\_\_\_

City \_\_\_\_\_ State \_\_\_\_\_ Zip \_\_\_\_\_

Phone: Home (\_\_\_\_\_) \_\_\_\_\_

Work (\_\_\_\_\_) \_\_\_\_\_

GLAZA Membership: \_\_\_\_\_ Yes \_\_\_\_\_ No

Accommodations Preference: \_\_\_\_\_ Nonsmoker \_\_\_\_\_ Smoker  
 \_\_\_\_\_ Twin \_\_\_\_\_ Single \_\_\_\_\_ Twin Share \_\_\_\_\_ with a friend or  
 \_\_\_\_\_ assign a roommate

Signature \_\_\_\_\_ Date \_\_\_\_\_

Signature \_\_\_\_\_ Date \_\_\_\_\_

**Mail To: GLAZA Costa Rica, Betchart Expeditions Inc.  
 17050 Montebello Road, Cupertino, CA 95014-5435**